

Britive Reporting and Analytics

Britive provides a variety of out-of-the-box reports, charts, and pre-configured dashboards for a clear view of your identity security posture. Detect potential risks, evaluate progress toward important metrics, and view identity and access trends over time. Combine audit log data with timeseries identity privilege details for simplified audit and compliance reporting.

britive



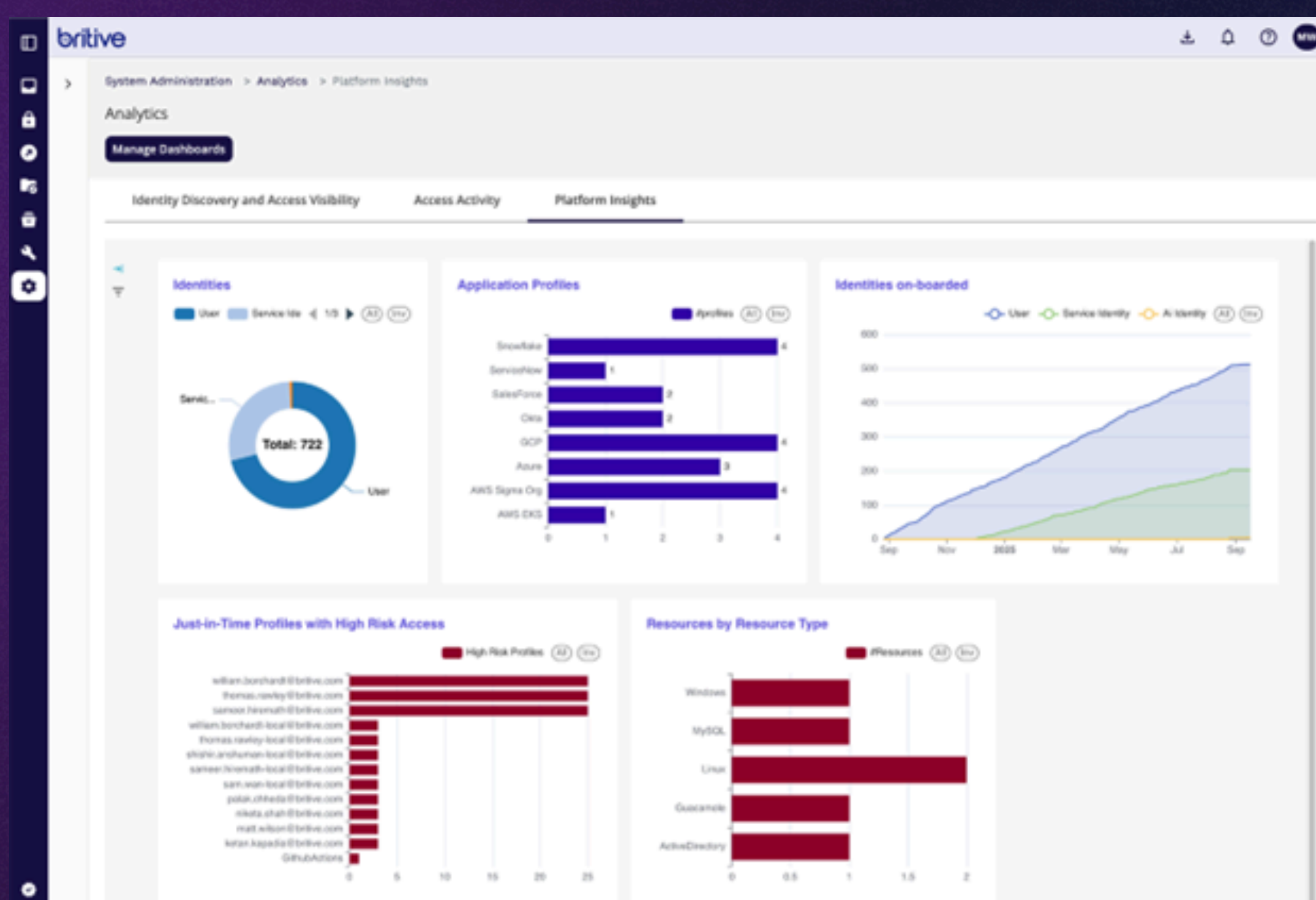
Britive Standard Reports

help administrators detect potential risks or issues and analyze usage. For example, a high-risk permissions report can help administrators monitor identities with access and act accordingly. These exportable text reports include detailed data on:

- User, NHI, and AI Identities
- Protected Applications and Resources
- Permissions and Access Profiles
- Secrets

Britive Insights

is a complete analytics and visualization package included as part of our standard offering. Numerous pre-configured charts and dashboards offer detailed insights on identities, related access, and platform usage. Each tenant has a dedicated data lake with full data model access for ultimate flexibility, data privacy, and performance. Britive Insights highlights include:



- Easily create custom reports, charts, and dashboards (or modify OOTB options)
- See current risk posture related to privilege access for human, NHI, and AI identities
- Timeseries data shows privilege assignment and use over time
- Detect underused or unused privileges
- Measure progress towards reducing standing privileged access risk by moving to JIT, Zero Standing Privileges
- Identify undesired privileged access or overprivileged access
- Track custom metrics and KPIs most important to your business
- Produce privileged access reports for audit and compliance with regulatory requirements (e.g. PCI, SOX, etc.)